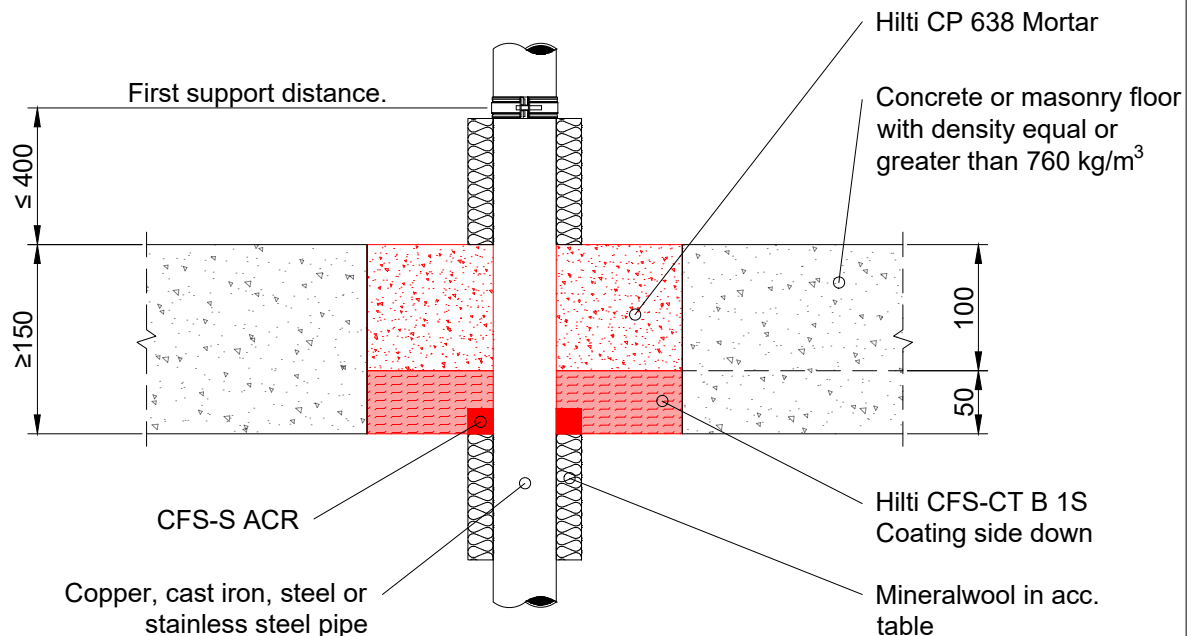
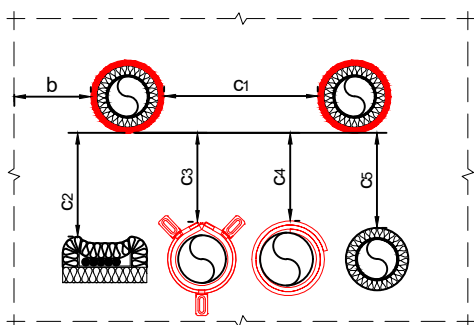
	APPLICATION:		ID:	
	Metal pipes Through Slab		CP638: MP-RF-M-04	
INFORMATION: - Not to scale - All units are in millimetres - Tested according EN 1366-3 - Classification Report 23003B	CP 638 Mortar + CFS-S ACR		REV: 02	DATE: 05/2025
	Fire Rating up to EI 120		Page 3/3	



Notes:

- All gaps around services and coated board edges filled with Hilti Firestop Acrylic Sealant CFS-S ACR

Metal pipes with local interrupted insulation Rockwool Roclap H&V Section					
Material	Diameter	Min. wall thickness	Locally Interrupted: Rockwool Roclap Thickness	Length on both sides of the floor	Fire rating in mixed opening
Copper, cast iron, steel, stainless steel.	≤ 28	0.9	40	≥ 800	EI 120-C/U
Copper, cast iron, steel, stainless steel.	≤ 54	1.2	40	≥ 800	EI 120-C/U
Copper, cast iron, steel, stainless steel.	≤ 108	1.5	40	≥ 800	EI 120-C/U
Cast iron, steel, stainless steel.	≤ 165	5	40	≥ 800	EI 120-C/U



Spacing overview for mixed seals		
Description	Shortcut	Distance
To seal edge	b	≥ 50 mm
To other pipes with CFS-S ACR	c ₁	≥ 38 mm
To cables with CFS-IS	c ₂	0 mm
To other services with CFS-C EL	c ₃	0 mm
To other services with CFS-B	c ₄	0 mm
To any other services	c ₅	≥ 100 mm

Maximum opening size without additional support: 2000 x 1800 mm
or reduced width, with up-to 10m length. See classification report for further details.

- The application limits on this detail are for guidance purposes only. For more detailed information based on the full range of available test results please contact the Hilti Technical Advisory Service.
- The product and application has been assessed as a minimum to the BS 476 standard. It may have additional European and worldwide testing. Please contact Hilti for further information.
- All installations should be carried out in accordance with Hilti's installation instructions and by competent & experienced installers using Hilti branded products.
- All services are to be correctly and adequately supported to prevent collapse and distortion.

Hilti (Gt. Britain) Limited | No 1, Circle Square | 3 Symphony Park | Manchester | M1 7FS

Freephone: 0800 886 100 | Website: www.hilti.co.uk

LEGAL NOTICE: This template contains Hilti Intellectual Property which is legally protected, including Community registration of Hilti trademarks. For use only by Hilti customers and in conjunction with Hilti products. No third party use/products is authorised and breaches Hilti's intellectual property rights. Hilti accepts no responsibility for unauthorized use and reserves all rights to take legal action to enforce its rights in law.