



APPLICATION:

## Cable Trunking

ID:

CFS-FS: 09

## INFORMATION:

- Not to scale
- All units are in millimetres
- Tested according EN 1366-3
- Approval ETA - 18/1024

## CFS-FS M Flexible Seal

REV:

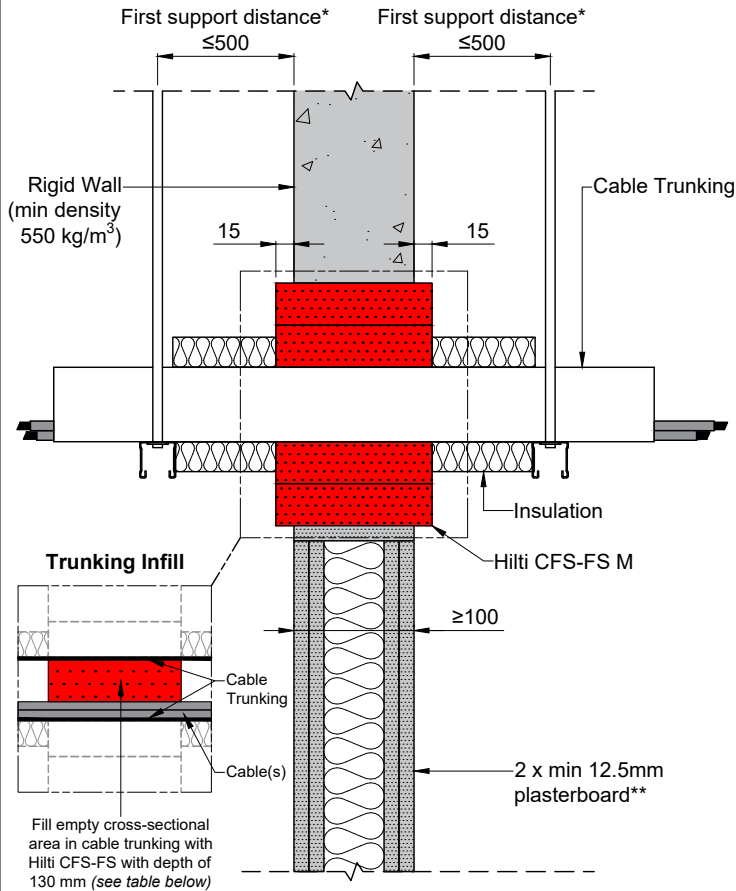
DATE:

02

02/2025

## Fire Rating up to EI 60

Page 1/1

Acoustics rating:  $R_w = 50$ 

Maximum opening dimensions: 1200x500mm. For blank openings see approval documents.

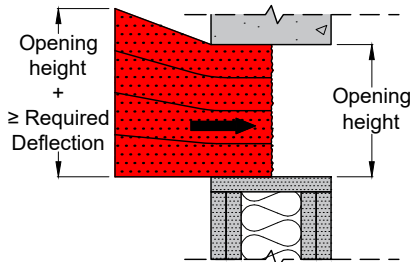
\*First support and ancillary products should be capable of achieving the same fire performance as the seal and supporting structure.

\*\*Comprising timber or steel studs. Wall construction itself has been classified according to EN 13501-2.

## Service Movement Details

Maximum Deflection=25mm. Vertical Compression  $\geq$  Required Deflection

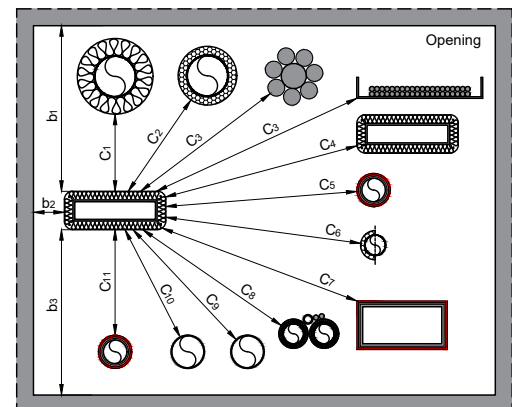
## If movement capability is required



Ref.	Service Type (See service standard detail for more specific information)	Distance (mm) <sup>†</sup>
b <sub>1</sub>	To top of opening	$\geq 70^{\dagger\dagger}$
b <sub>2</sub>	To side of opening	$\geq 0^{\dagger\dagger}$
b <sub>3</sub>	To bottom of opening	$\geq 35^{\dagger\dagger}$
C <sub>1</sub>	To metal pipe w/ mineral wool insulation	$\geq 0$
C <sub>2</sub>	To metal pipe w/ combustible insulation	$\geq 30$
C <sub>3</sub>	To cables/cable bundle/cable carrier	$\geq 30$
C <sub>4</sub>	To cable trunking w/ mineral wool insulation	$\geq 0$
C <sub>5</sub>	To combustible plastic pipe w/ <a href="#">Hilti CFS-B</a>	$\geq 0$
C <sub>6</sub>	To MLC (Aluminium composite) pipe w/ or w/o insulation	$\geq 50$
C <sub>7</sub>	To rectangular PVC Duct w/ <a href="#">Hilti CFS-B</a>	$\geq 0$
C <sub>8</sub>	To KlimaSplit bundle	$\geq 50$
C <sub>9</sub>	To CPVC or TracPipe®	$\geq 30$
C <sub>10</sub>	To combustible plastic pipe & conduit w/o addn. protection	$\geq 50$
C <sub>11</sub>	To conduit w/ <a href="#">Hilti CFS-B</a>	$\geq 0$

<sup>†</sup>All distance values can be horizontal, vertical or diagonal.  
<sup>††</sup>b<sub>1</sub>, b<sub>2</sub>, b<sub>3</sub> = 0mm if no movement is required.

Cable Trunking				
Material	Max Dimensions (W x H) [mm]	Type of Insulation	Insulation Thickness Range; Type (Length) [mm]	Classification
Cable Trunking Metal	Up to 150 x 150 <sup>‡</sup>	Rockwool® DuctWrap	25; LI (420)	EI 60 (U/U)
Cables	d $\leq 80^{\dagger\ddagger}$	N/A	N/A	EI 60
Note: Fill empty cross-sectional area in cable trunking with Hilti CFS-FS with depth of 130 mm				
<sup>‡</sup> Max Cross Section area of 22,500 mm <sup>2</sup>				
<sup>†‡</sup> Max 28mm for coaxial cables & max 24mm for non-sheathed cables				



- The application limits on this detail are for guidance purposes only. For more detailed information based on the full range of available test results please contact the Hilti Technical Advisory Service.
- The product and application has been assessed as a minimum to the BS 476 standard. It may have additional European and worldwide testing. Please contact Hilti for further information.
- All installations should be carried out in accordance with Hilti's installation instructions and by competent & experienced installers using Hilti branded products.
- All services are to be correctly and adequately supported to prevent collapse and distortion.

Hilti (Gt. Britain) Limited | No 1, Circle Square | 3 Symphony Park | Manchester | M1 7FS

Freephone: 0800 886 100 | Website: [www.hilti.co.uk](http://www.hilti.co.uk)

**LEGAL NOTICE:** This template contains Hilti Intellectual Property which is legally protected, including Community registration of Hilti trademarks. For use only by Hilti customers and in conjunction with Hilti products. No third party use/products is authorised and breaches Hilti's intellectual property rights. Hilti accepts no responsibility for unauthorized use and reserves all rights to take legal action to enforce its rights in law.