



APPLICATION:

Single Steel Electrical Back Box

ID:

CP617:SP-FW-E-03**INFORMATION:**

- Not to scale
- All units are in millimetres
- Tested to EN 1366-3:2021
- Classification Report: FIRES-CR-059-24-AUPE Edition 2

CP 617 putty pads

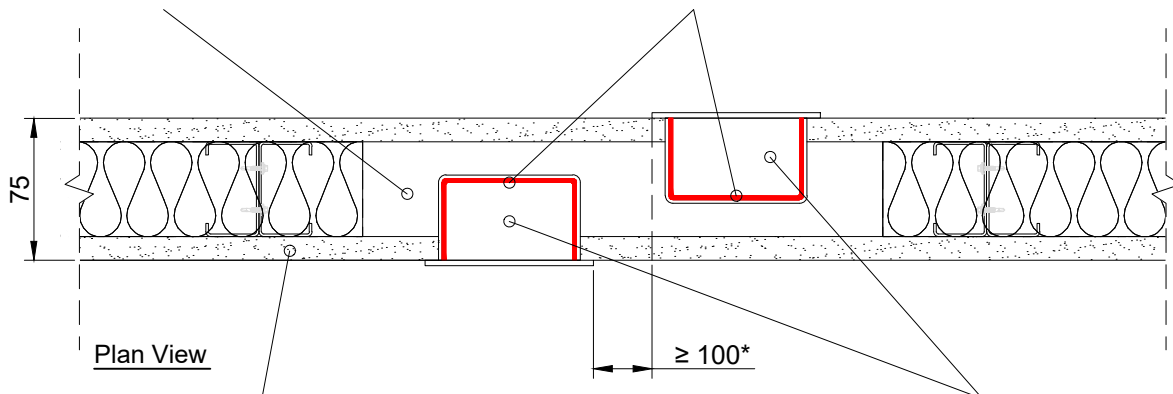
REV:

DATE:

01**01/2025****Fire Rating EI60****Page 1/1**

The electrical sockets does not require aperture framing.

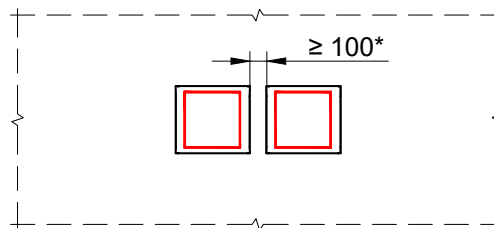
Hilti CP-617 Intumescent Putty Pad located inside or outside electrical back box socket.



Min. 75 mm comprising timber or steel studs, lined on both faces with min. 1 layers min. 12.5 mm thick board. Construction classified to EN 13501-2. Aperture framing is not required

Combustible electrical back box socket ≤ 135 mm x 75 mm:

Electrical back box socket Centaur® CDLB1-47 and CDLB2-47
Electrical sockets Volex VX1500



Front View - Single

Notes:

Min. 100 mm to other penetrations seals apertures.

- Tested height of single non-combustible sockets: 1745

The test results are valid for any electrical socket box size within a linear arrangement with equal to or smaller height, width, and diameter than those tested, whether with or without services, provided that:

- The distances between services and between services and the aperture edge are not smaller than the minimum distances required above.

1. The application limits on this detail are for guidance purposes only. For more detailed information based on the full range of available test results please contact the Hilti Technical Advisory Service.
2. The product and application has been assessed as a minimum to the BS 476 standard. It may have additional European and worldwide testing. Please contact Hilti for further information.
3. All installations should be carried out in accordance with Hilti's installation instructions and by competent & experienced installers using Hilti branded products.
4. All services are to be correctly and adequately supported to prevent collapse and distortion.